

Ski Doo G5 Retainer Instructions

Billings, MT - (406) 534-3478 - www.tkicnc.com

- _____ Aluminum Plug
- _____ Washer
- _____ Shoulder Bolt
- _____ Speed Sensor Ring W/ Magnets
(Chain Case Only)
- _____ Retaining Compound
- _____ Instructions



TOOLS NEEDED:

- 10mm Wrench
- T27 Torques Bit
- Flat Head Screwdriver
- 9/16" Socket
- Torque Wrench
- Blue Loc-Tite
- Brake Cleaner or other cleaning solvent

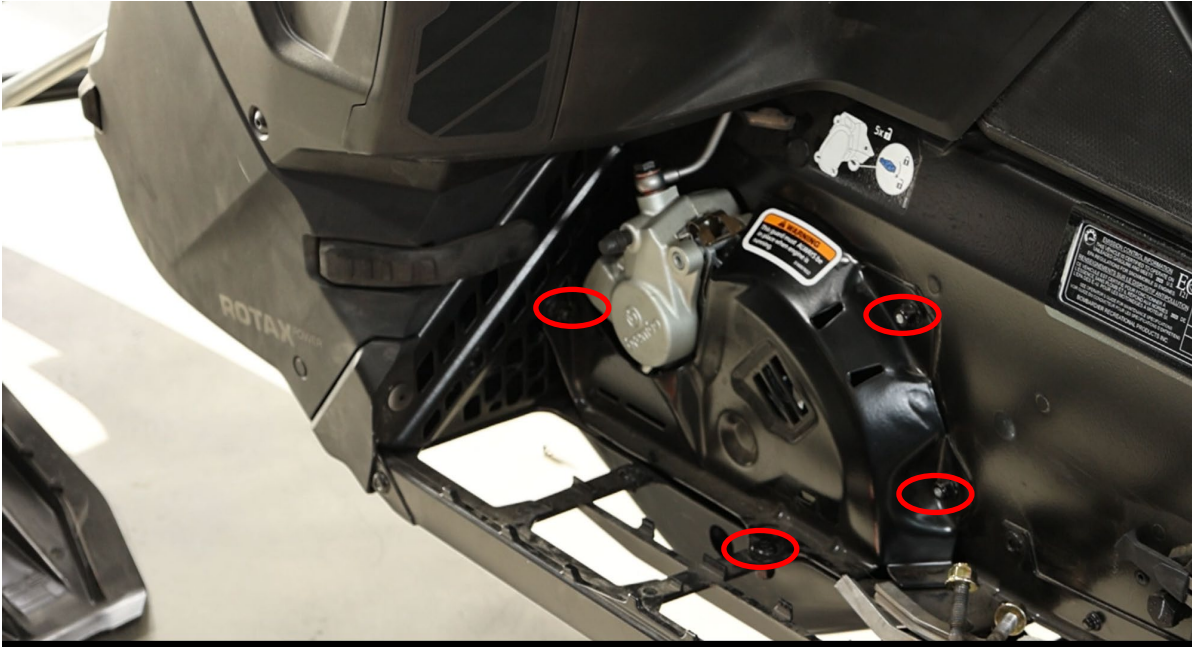


FOR MORE OPTIONS
CHECK OUT OUR
WEBSITE

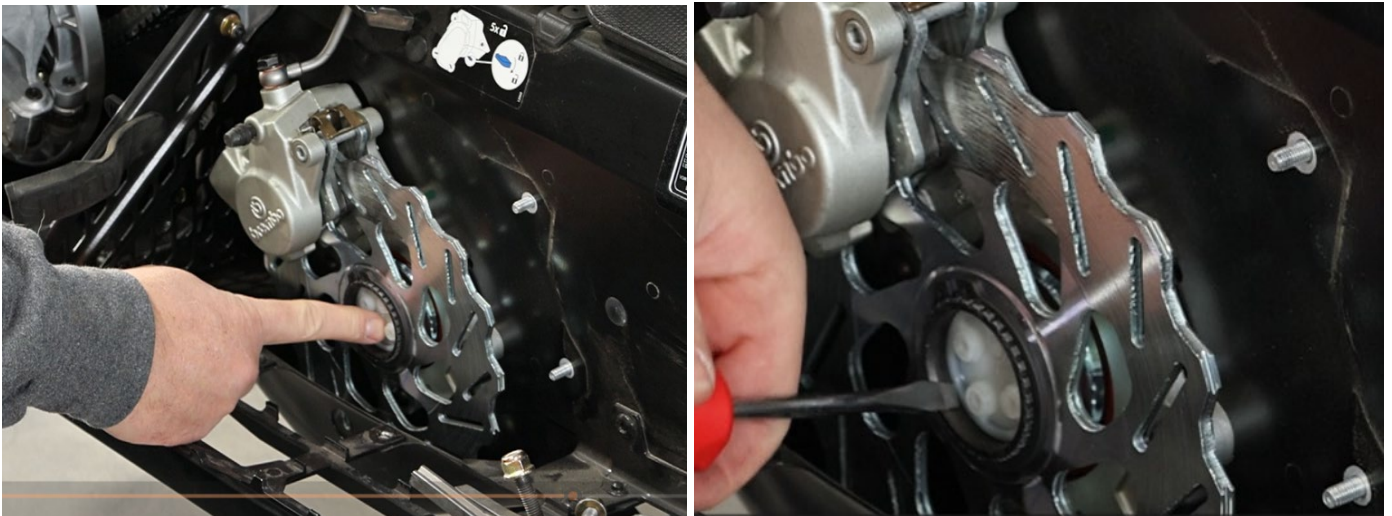
SKI-DOO G5 RETAINER INSTALLATION INSTRUCTIONS

Step 1: Remove the Clutch Side Panel (You will need to get to the bolt on the footwell.)

Step 2: Remove the brake rotor cover by removing the three 10mm bolts and the T27 torques bit (with 10mm nut).

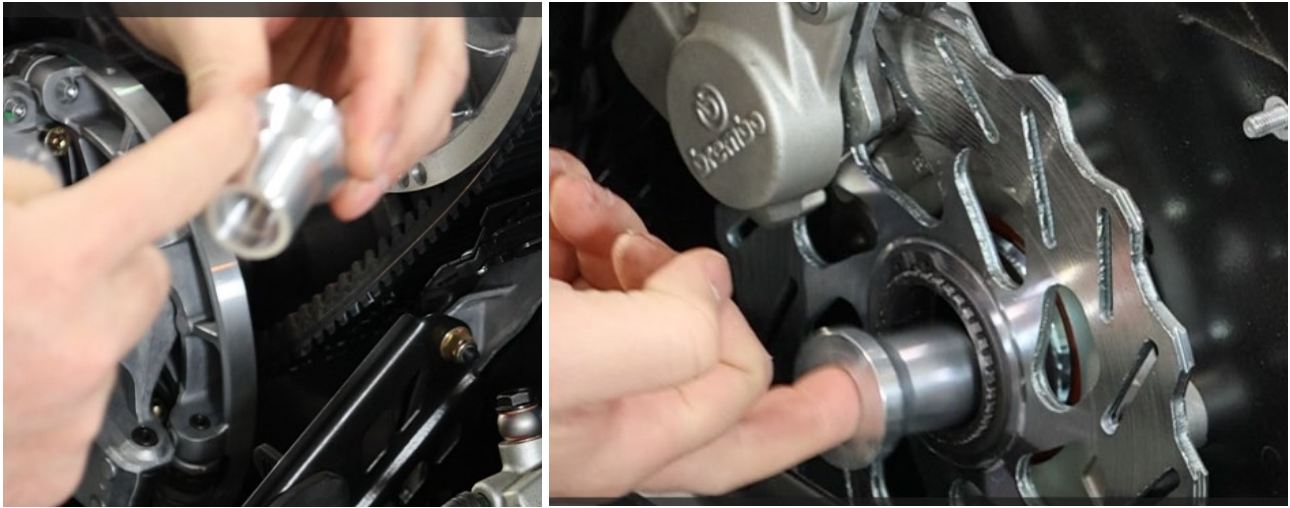


Step 3: Once the cover has been removed, remove the plastic plug which allows access to the drive shaft. Slide a flat head screw driver on one side of the plug and it should pop out.



Set the plastic plug aside as you will reinstall prior to putting the brake rotor cover back on.

Step 4: Remove the aluminum plug from the shoulder bolt and washer. Use a cleaning solvent such as brake cleaner to wipe the aluminum plug as well as the inside of the drive shaft on the chain case side. Coat with a generous amount of retainer compound. Be careful not to get the retainer compound on any of the inside threads or splines of the shaft. Using a broom handle or pipe, push the plug through the shaft to the other side of the sled.



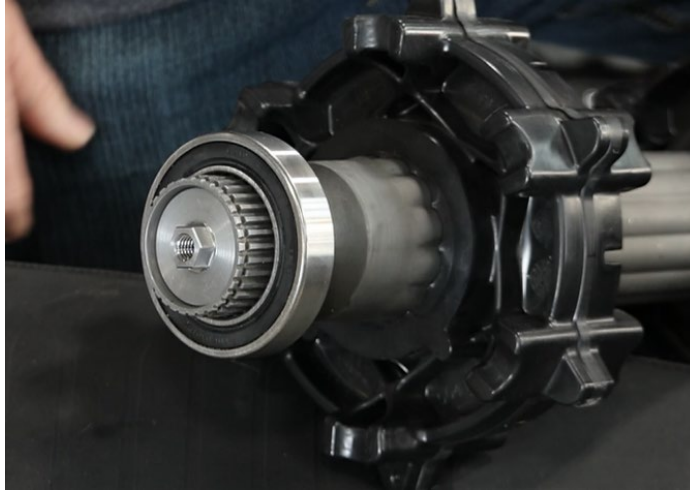
The aluminum plug will come through the shaft and line up with the edge of the inner shaft piece as shown below.



Step 5: To insure that the Loctite sets up and keeps the aluminum plug in the proper place, we will use the shoulder bolt with the washer on and thread the shoulder bolt into the aluminum plug finger tight. The washer is used to keep the Loctite from getting on the splines of the drive shaft and will be removed after the Loctite has set up. Recommended time for Loctite set up is 1 hour (for best results).



Step 6: After the appropriate amount of set up time. Remove the shoulder bolt and washer. Put a generous amount of Loctite in a line down the threads of the shoulder bolt and reinstall the shoulder bolt into the aluminum plug. (Again, the steel washer used in step 5 will not be included when installing the shoulder bolt.) Using a 9/16 socket and a torque wrench, you will torque the shoulder bolt to 40 fps.



Step 7: Once the shoulder bolt is installed the speed sensor will need to be installed over the 9/16" nut for chain case users. There are 4 magnets that work to control the speed sensor and also create 12 lbs of force to keep the speed sensor ring in place. To remove the speed sensor ring, you can insert two 1/4-20 bolts into the two threaded holes to use as a jack screw for easy removal.



Step 8: Once the retainer is installed, you will need to reinstall the plastic plug and the brake rotor cover as well as the clutch side panel. You will now be able to close your chain case or complete the belt drive install.